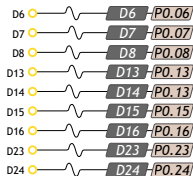
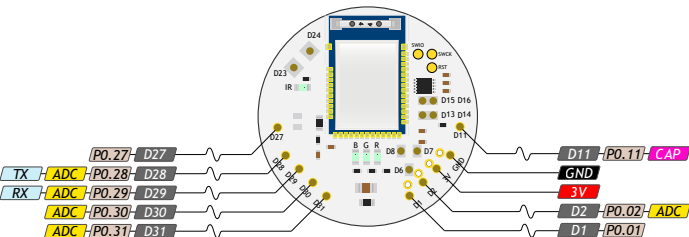


# ESPRUINO PUCK.JS PINOUT



Interface on all GPIO pins: 1×SPI, 1×UART, 1×I<sup>2</sup>C

When power is first applied, the MDBT42Q checks if pin D8 is at 3.3V.

If it is, it initialises the on-chip UART on D8 (RX) and D6 (TX) and puts the Espruino console on it at 9600 baud.