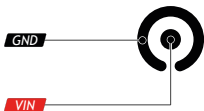
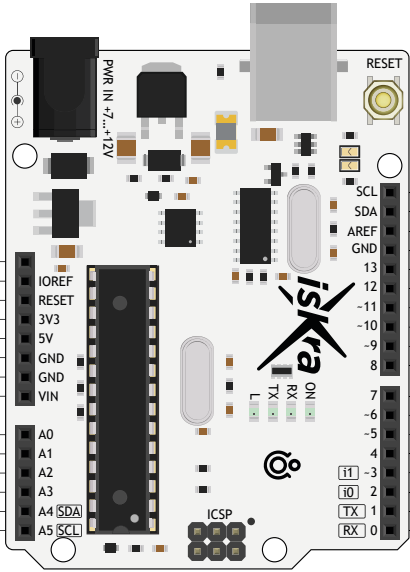


- Power
- GND
- Arduino pin name
- Port name
- Analog input
- UART
- I²C
- SPI
- Interrupt
- Specials pins
- Not connected
- PWM

DC Barrel Jack



USB Type-B



- I/OREF
- RST
- 3V3
- 5V
- GND
- GND
- VIN
- A0 - PC0 - 14
- A1 - PC1 - 15
- A2 - PC2 - 16
- A3 - PC3 - 17
- SDA - A4 - PC4 - 18
- SCL - A5 - PC5 - 19

- 19 - PC5 - A5 - SCL
- 18 - PC4 - A4 - SDA
- AREF
- GND
- 13
- 12
- 11
- 10
- 9
- 8
- 7
- 6
- 5
- 4
- 3
- 2
- 1
- 0

ICSP ATmega328P

